

Figure 1: Location of TAM, Alpala and Aguinaga deposits at the Cascabel project.

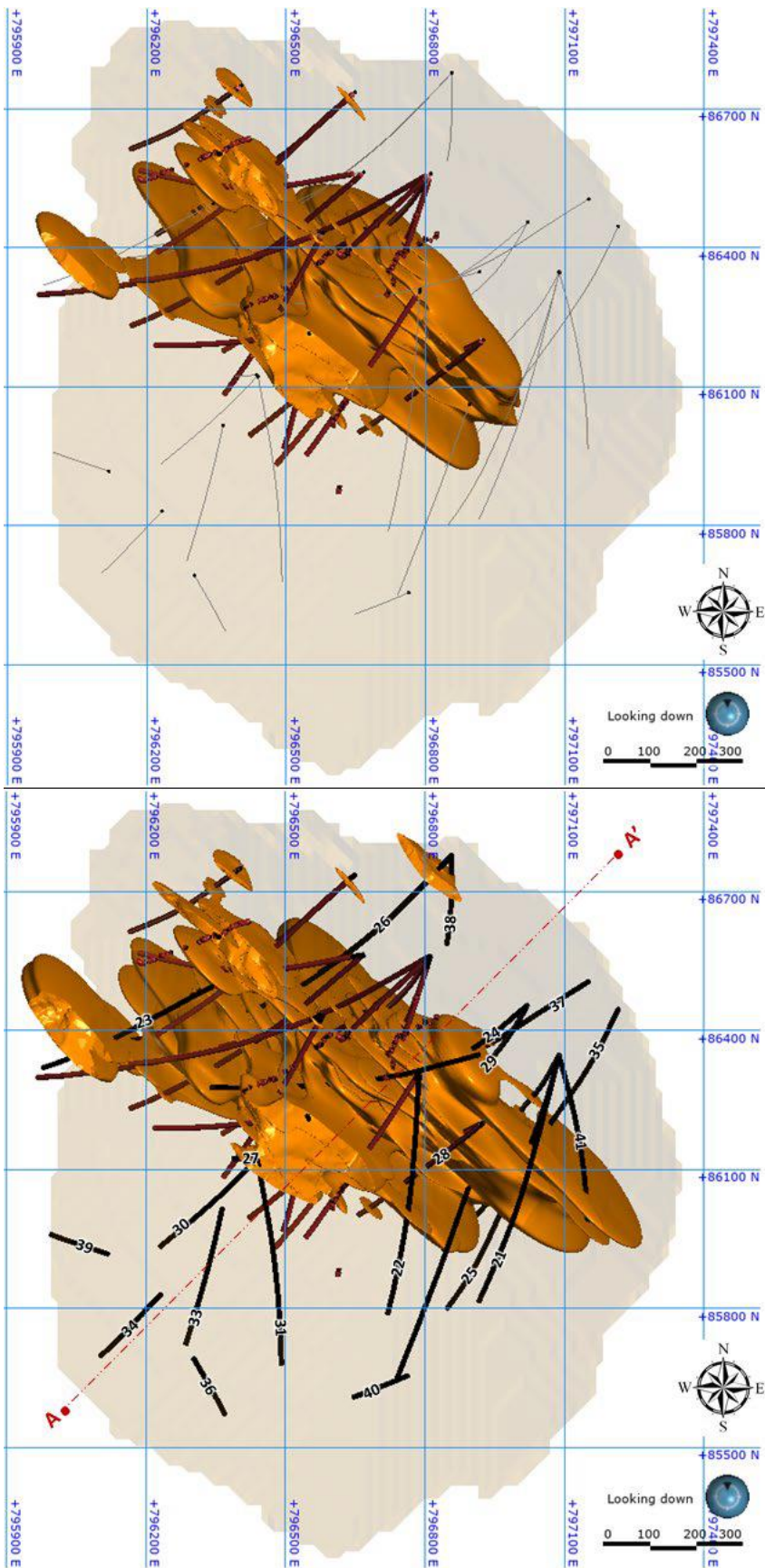


Figure 2: Comparative plan view looking down of TAM orebody at a cut-off grade of 0.3% CuEq, showing the orebody at the time of the TAM maiden MRE in holes 1-18 (TOP) and the current orebody from drilling completed in holes 1-41 (BOTTOM). Potential open pit resource area previously identified in the TAM Maiden MRE is shown in light brown, and the orientation line of cross-section A-A' (overleaf) is shown in red. Grid spacing 300m.

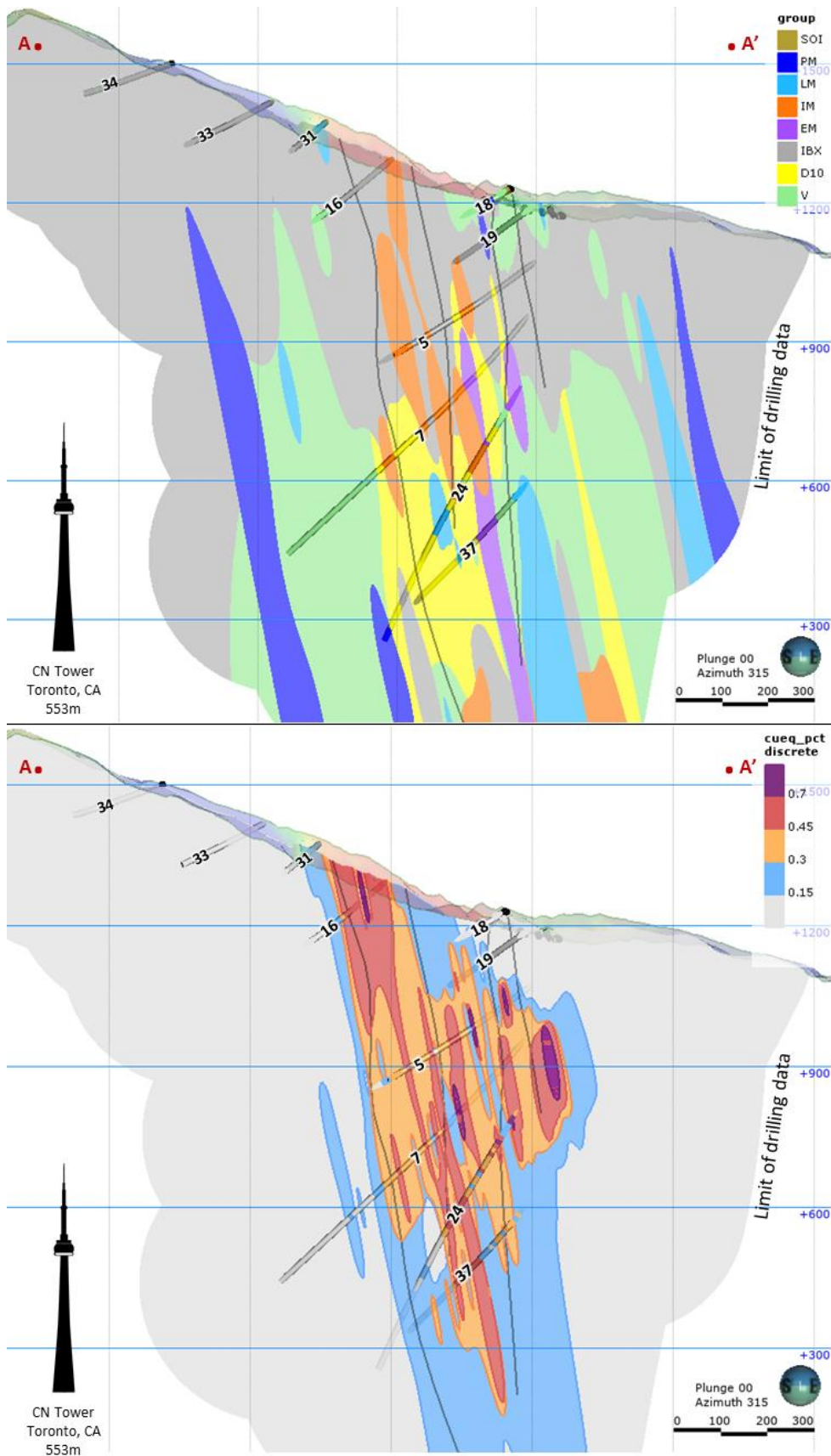


Figure 3: Drill Section A-A', looking northwest, with a window thickness of 150m, showing modelled geology (TOP) and CuEq grade shells (BOTTOM) at the TAM deposit. Grid spacing 300m.