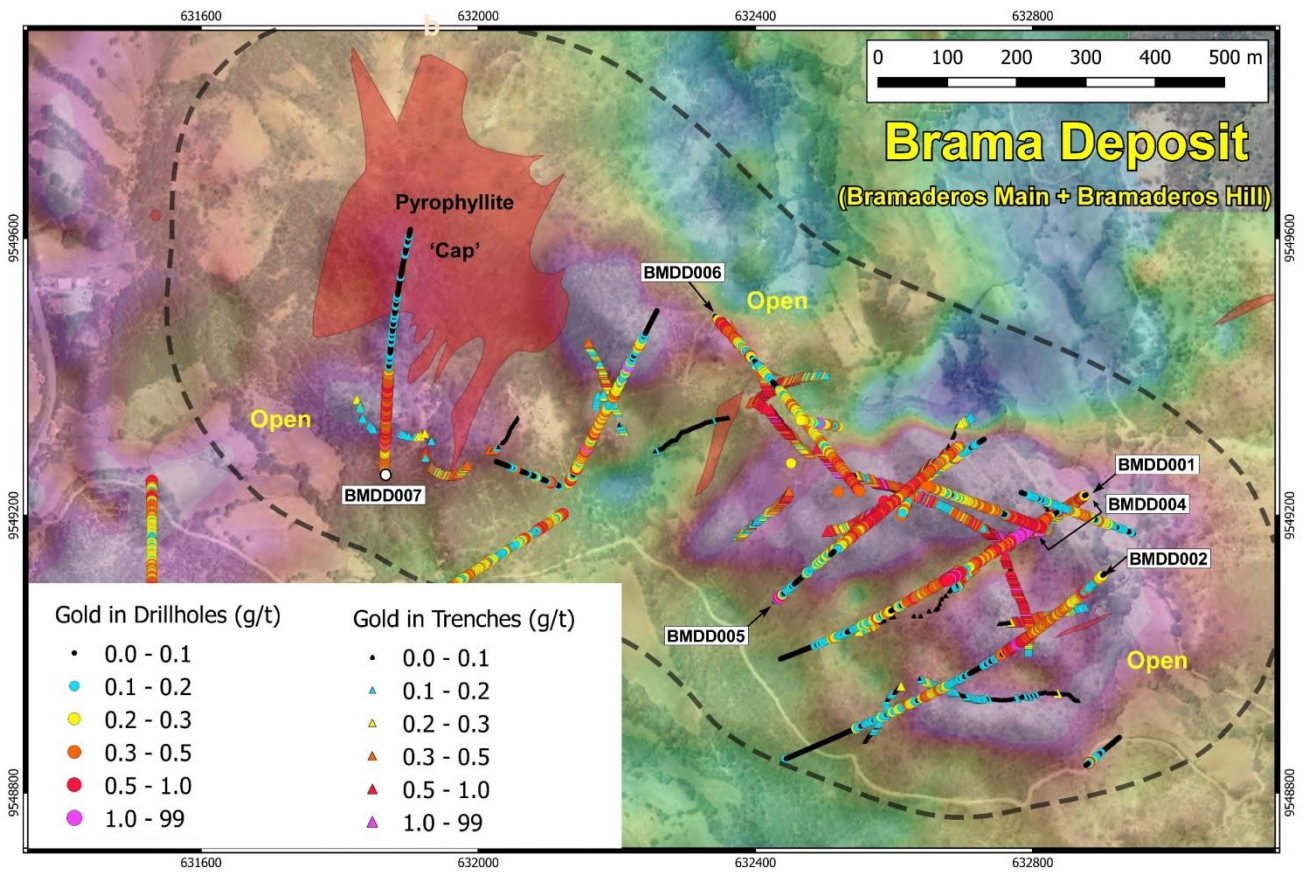
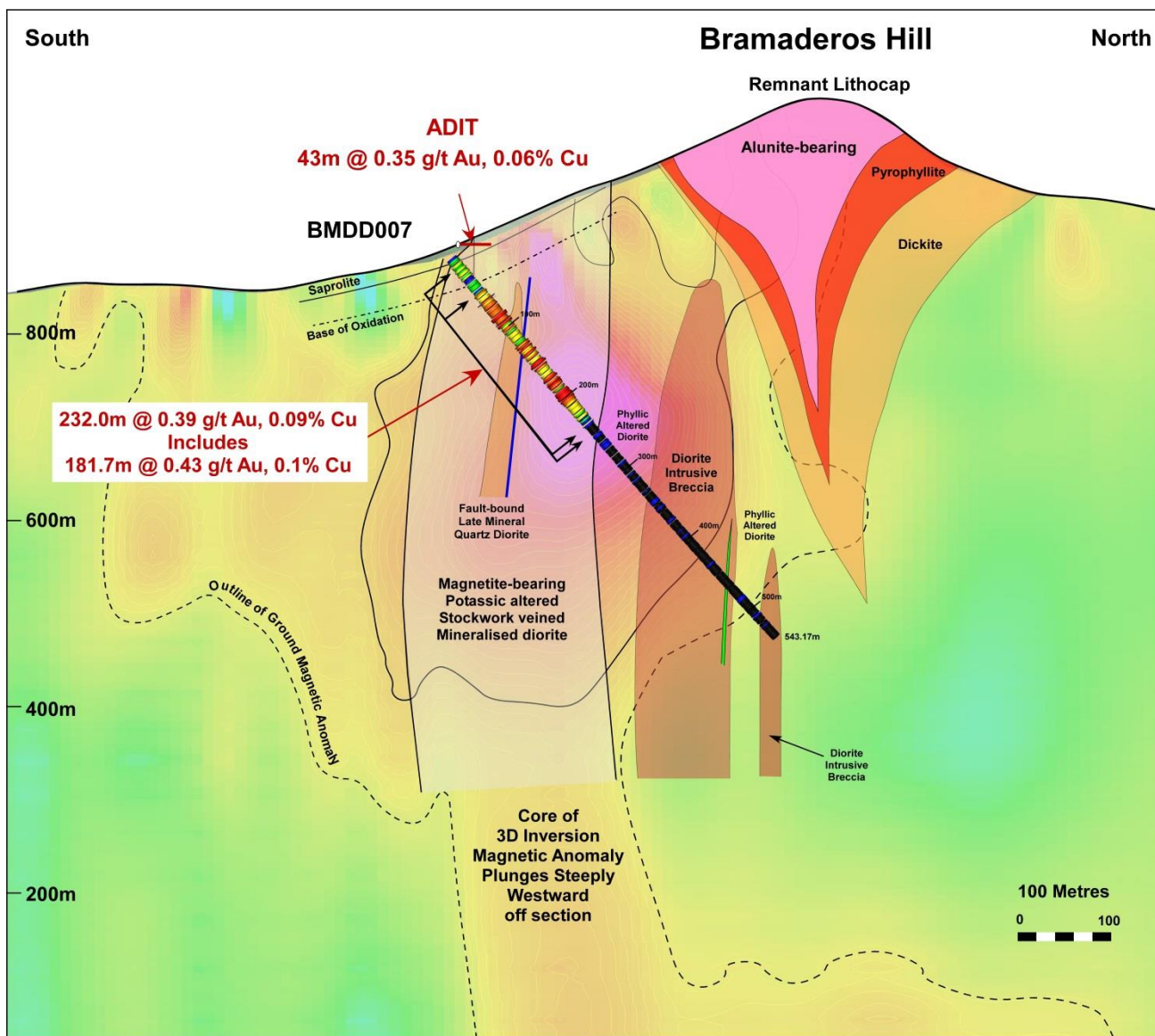


**Figure 1:** Plan view of the Bramaderos Project porphyry gold-copper targets as defined by gold-in-soil anomalies and magnetic anomalies. The very large Brama target covers outcropping gold-copper mineralization extending from Bramaderos Hill to the south-east extension of the Bramaderos magnetic anomaly. Five other targets are all mineralized at surface and comprise Limon, Playas, Melonal, Porotillo and Sandia.



**Figure 2:** Plan view and drill status plan of the Brama porphyry gold-copper deposit showing all completed diamond drill holes (BMDD001 – BMDD007), historical holes, trench assays and recently processed ground magnetic data as Reduced-to-Pole (RTP) imagery.





**Figure 3:** North-South cross-section on trace of hole BMDD007, showing intersection of porphyry Au-Cu mineralization in BMDD007 associated with a magnetite-bearing and potassic-altered diorite body with intense stockwork veining. Modeling of ground magnetic data reveals this magnetic body plunges down to at least 800m depth below surface below and just west of the section line, allowing the mineralization intersected in BMDD007 to be tested for extension with future drilling. Additional deeper targets are also developing at greater depth in the magnetic model.