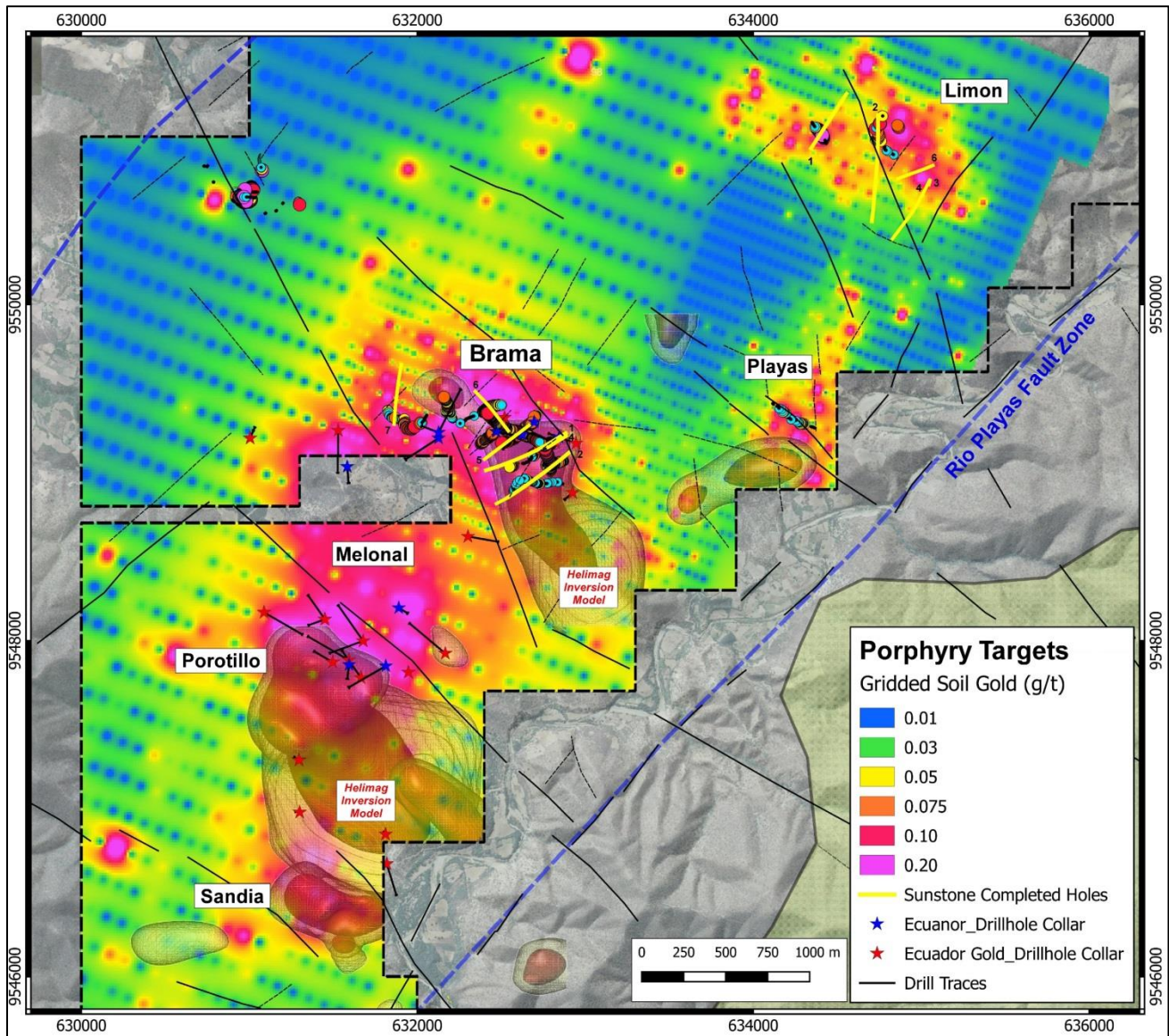
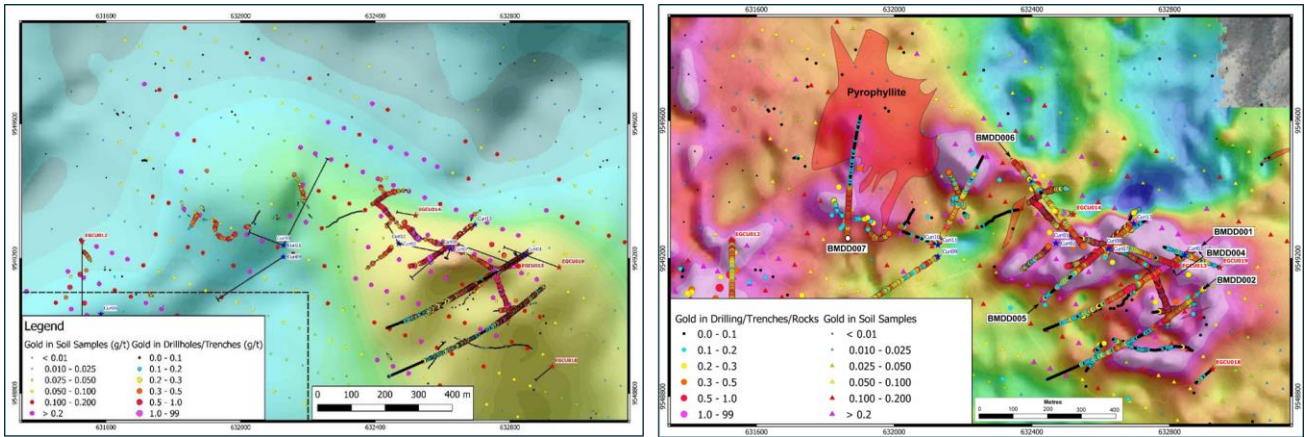


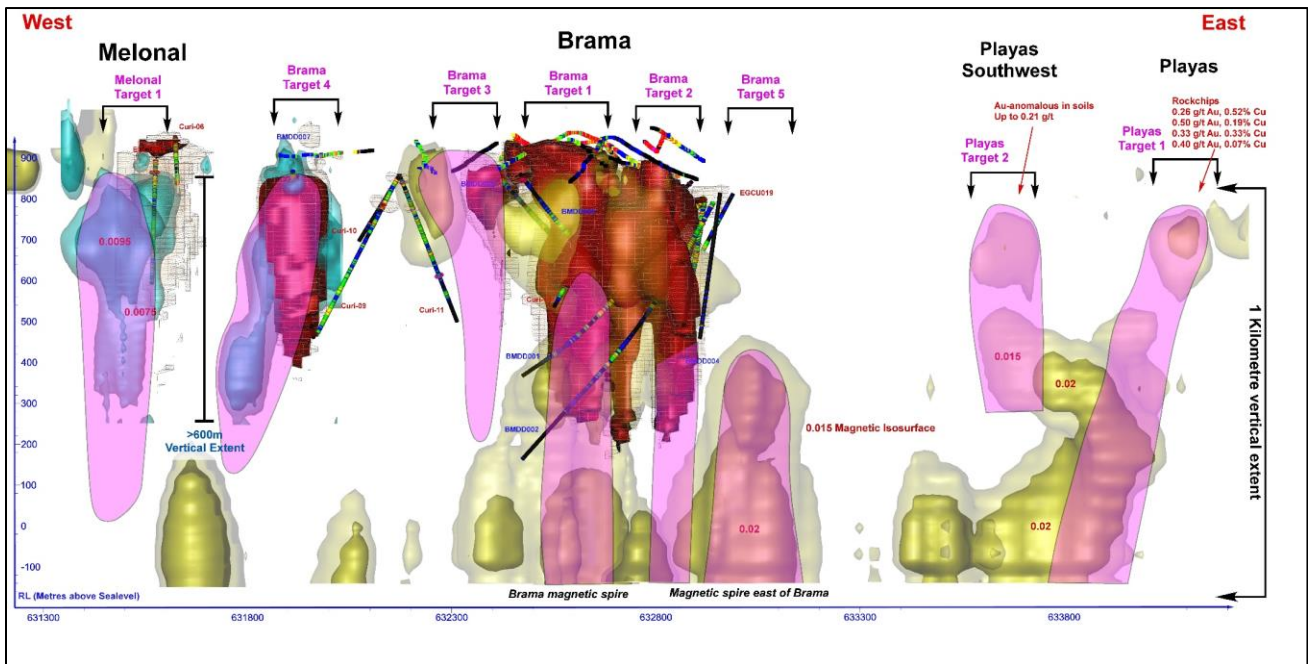
**Figure 1:** The Bramaderos concession showing the multiple porphyry gold-copper systems and the extension of the 2 million ounce Dynasty Goldfield epithermal belt.



**Figure 2:** Plan view of the Bramaderos Project porphyry gold-copper targets as defined by gold-in-soil anomalies and magnetic anomalies. The very large Brama target covers outcropping gold-copper mineralization extending from Bramaderos Hill to the southeast extension of the Bramaderos magnetic anomaly. Five other targets are all mineralized at surface and comprise Limon, Playas, Melonal, Porotillo and Sandia.



**Figure 3:** Side by side images of helicopter magnetic survey (left) and more detailed ground magnetic survey at Brama, demonstrating the 'breakthrough' in predicting the geometry of the pipe-like porphyry systems



**Figure 4:** Pipe-like target areas shown in pink over 3-D modelling of discrete magnetic bodies that correspond – where drilled – to higher-grade gold-copper porphyry systems. This cluster, across three systems, Melonal, Brama and Playas extends over 2.5km and includes at least 8 targets, all of which have been shown to be mineralized to some extent.