

Figure 1: Regional view of the Bramaderos Project concession showing the 4-km-long 'Epithermal Corridor' which includes West Zone, as a continuation of the Dynasty Goldfield.

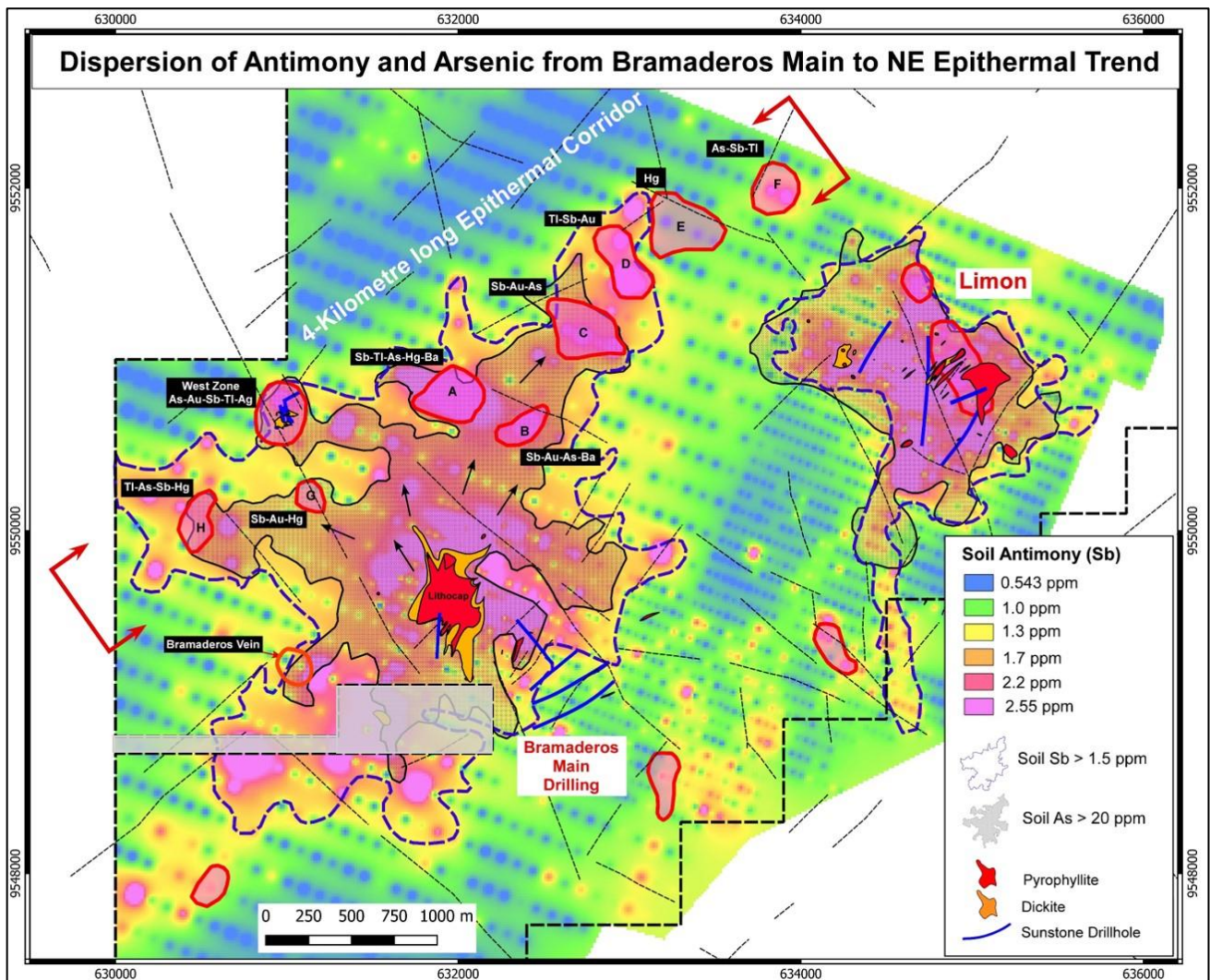


Figure 2: Plan view of the northern portion of the Bramaderos concession showing the epithermal corridor containing multiple targets (A-H and West Zone; labelled with the epithermal pathfinder elements relevant to each target), and the spatial relationship of this belt to the porphyry targets at Bramaderos Main and Limon. The extensive soil antimony and arsenic dispersion patterns (epithermal pathfinder elements) are shown surrounding the lithocap at Bramaderos vein and extending along the northeast-trending epithermal target trend.

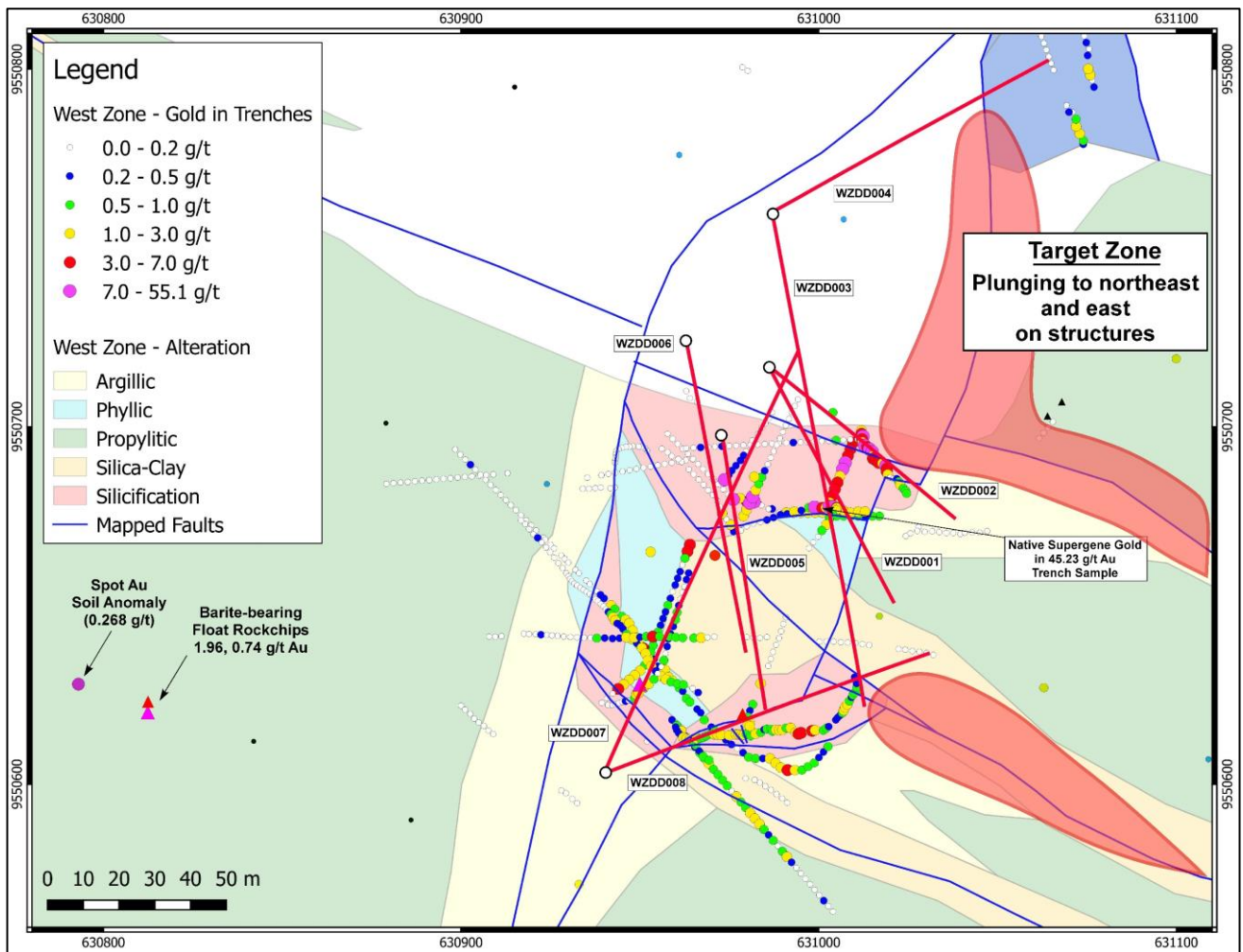


Figure 3: The West Zone area showing Sunstone and prior historic trench assay results and drill hole locations (red). The North Pod is significantly higher grade than the south pod at surface and drill hole WZDD002 may have drilled under the potentially shallow-dipping main epithermal zone. A shallow-plunging target zone may remain off the east and northeast edge of the North Pod as shown, and potentially on a similar structure to the east of the South Pod.