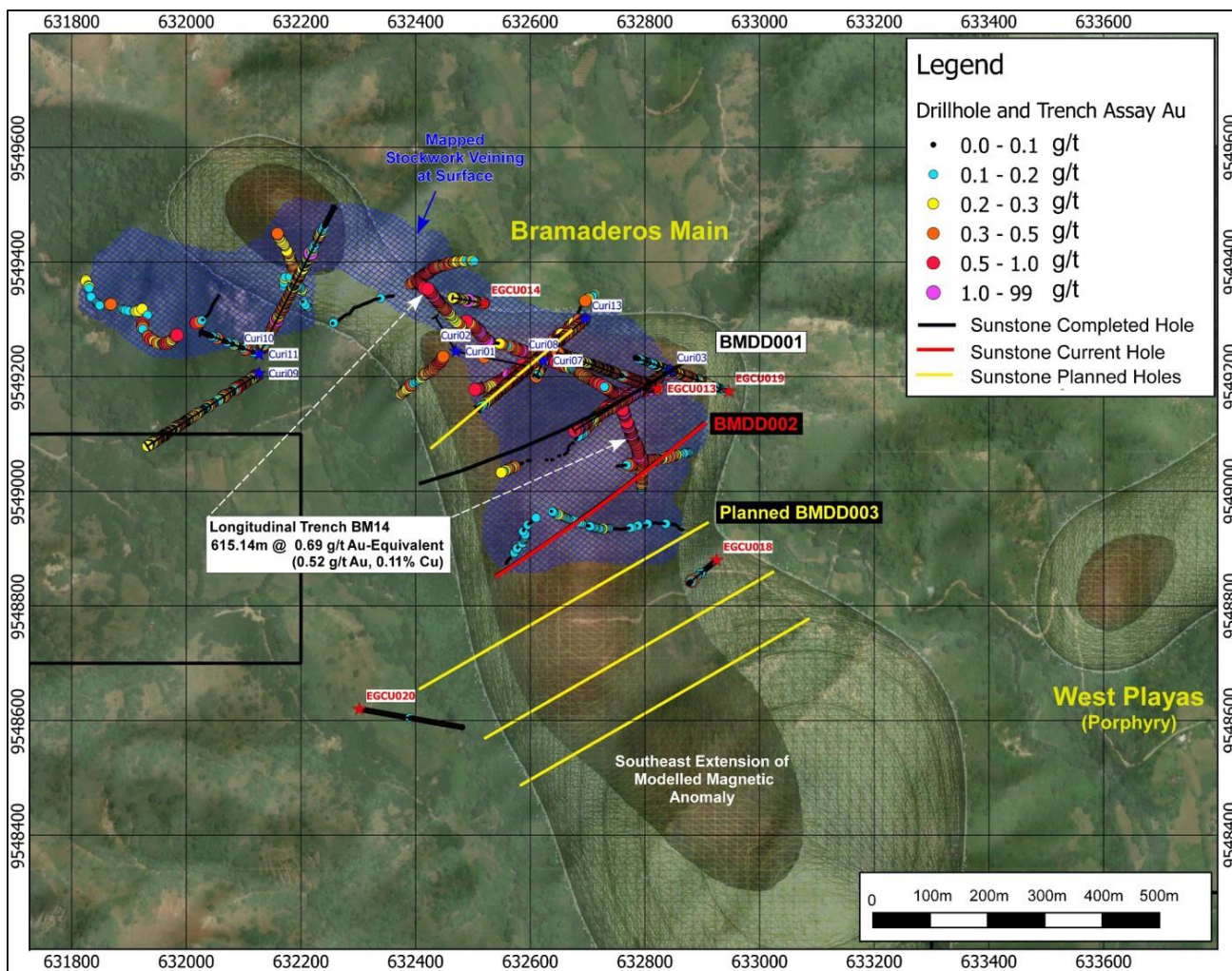


**Figure 1:** Cross section showing BMDD001, interpreted geology, and assay results as reported in this announcement. Intervals still awaiting assays are also shown.



**Figure 2:** Plan view of the Bramaderos Main prospect showing the location of BMDD001 (black line) and planned holes (yellow) following the south-east plunging magnetic body. Active drill hole BMDD002 is shown in red. The locations of trenches are shown and correlate with the surface projection of the magnetic body.

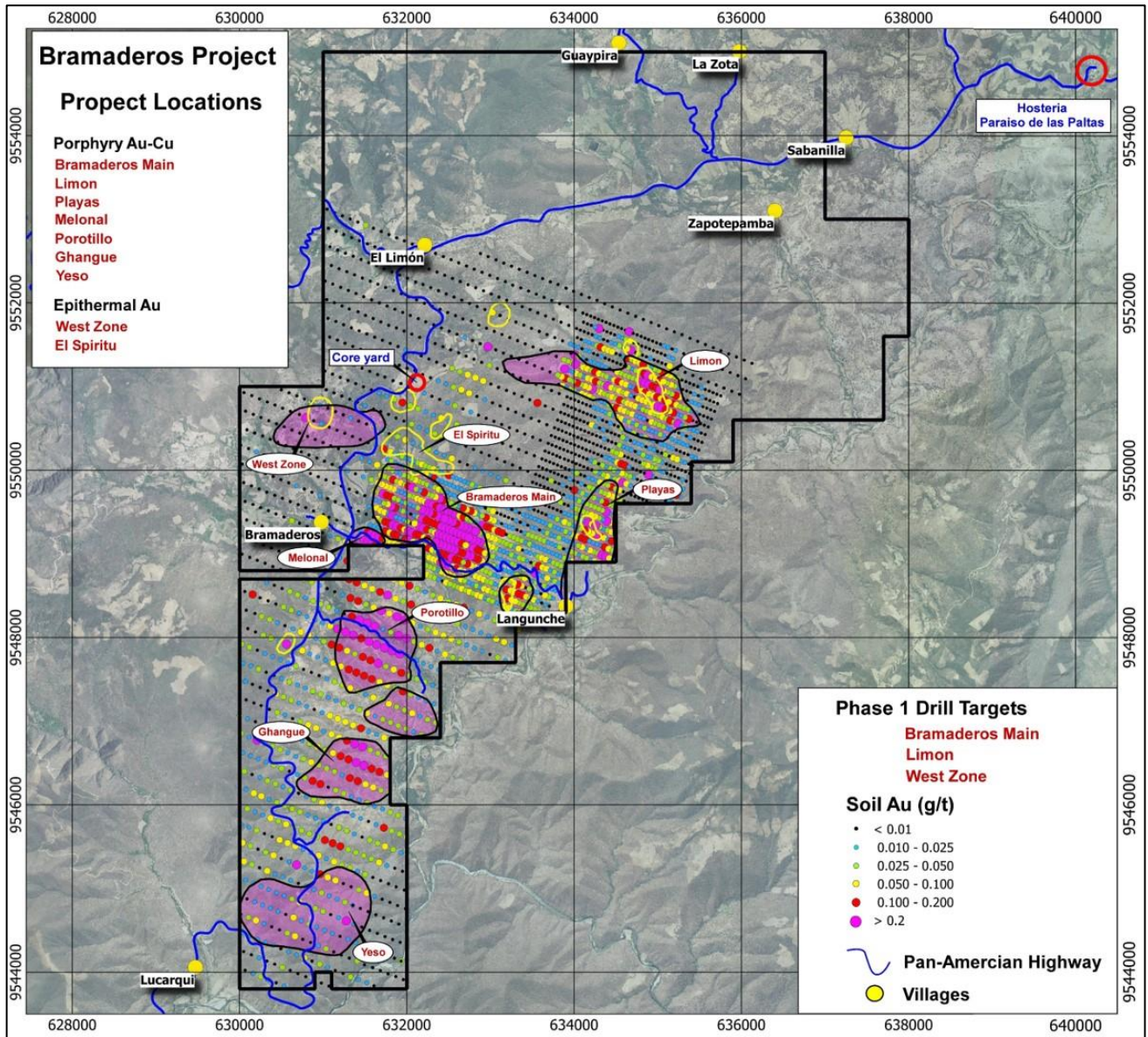


Figure 3: Location of prospects within the Bramaderos concession.