

Figure 1: Plan view of surface geochemical zoning in soil sample assays and locations of holes LMDD001 and 002. Hole LMDD001, which was drilled under trench Tr-LM01, lies near the north-western-most edge of the broader system. In the third dimension the porphyry zone is interpreted to be plunging to the south-east as shown in Figure 2. The shaded yellow area is emerging as the follow-up target zone.

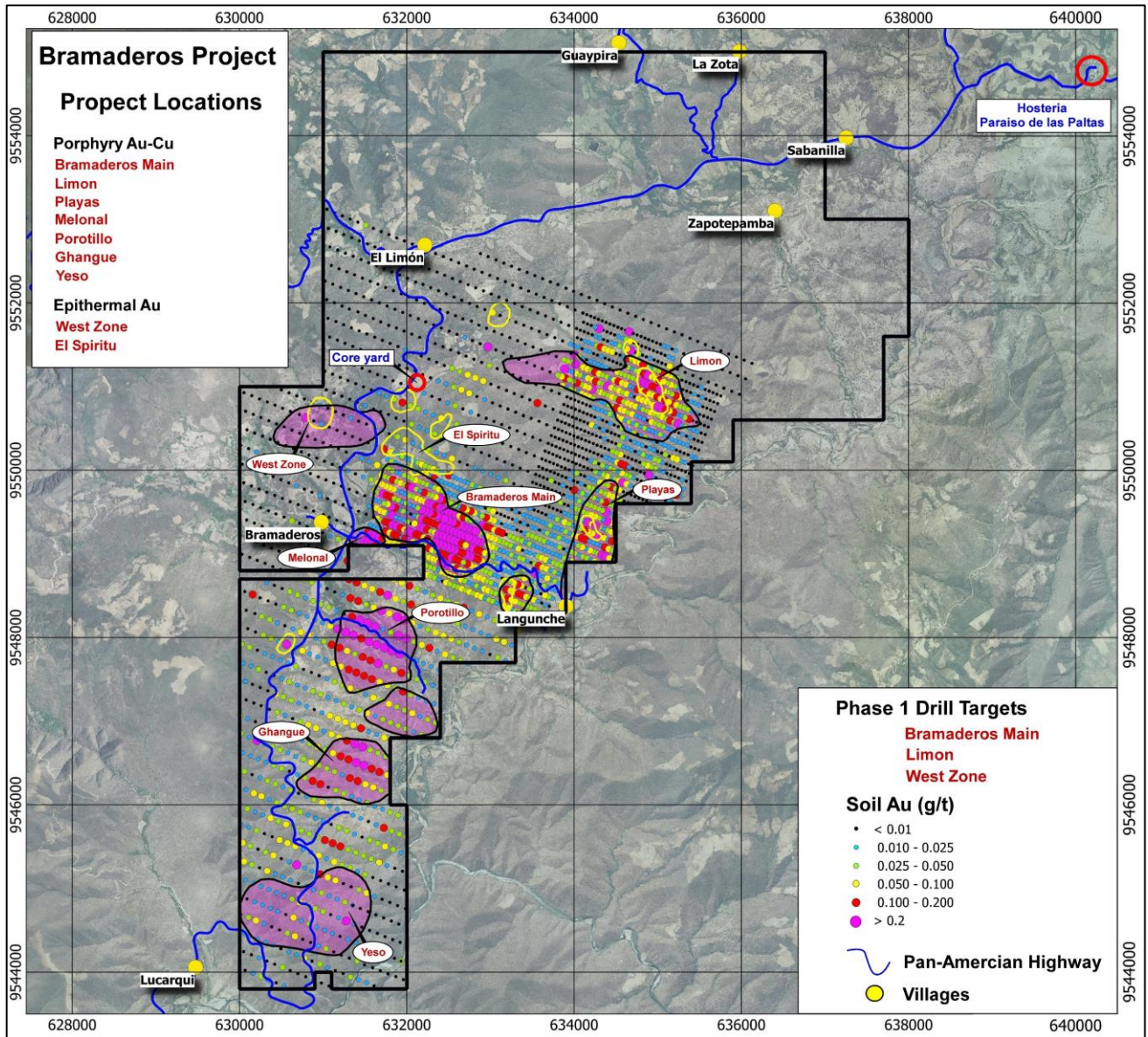


Figure 2: Location of prospects within the Bramaderos concession