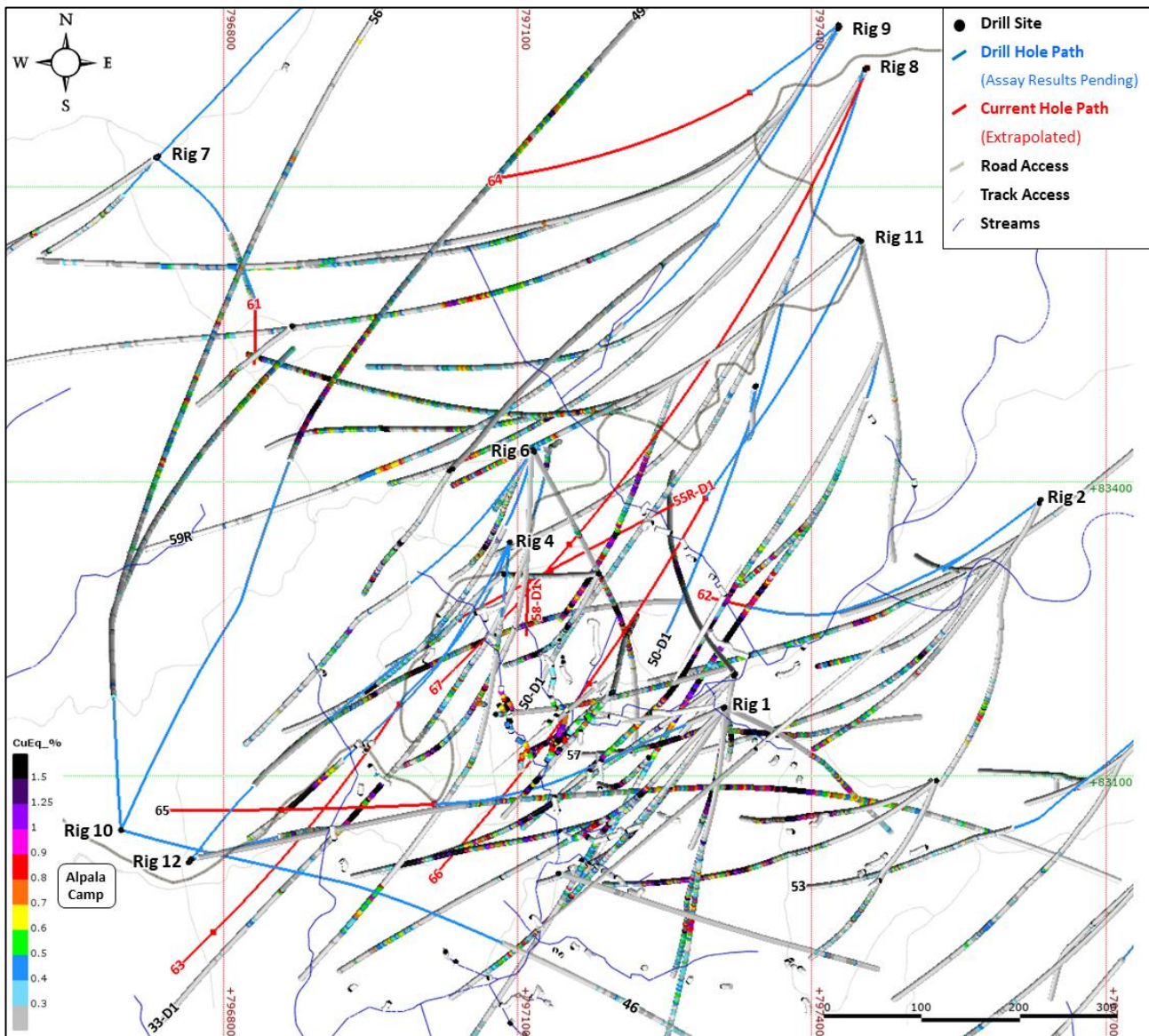


**Figure 1:** Location of Cascabel project in northern Ecuador, highlighting the significant capital advantages held by the project, with proximity to ports, road infrastructure, hydro-electric power stations and the trans-continental power grid.



**Figure 2:** Drill Hole Plan along the greater Alpala area, showing copper equivalent assay results, extrapolated current drill hole paths in red, and intervals awaiting assay results indicated in blue.



**Figure 3:** Core photo from Hole CSD-18-065 showing the intersection of a D10 Diorite containing moderate Act-propylitic alteration overprinted by weak Argillic alteration.