

Figure 1: Plan view showing the large Bramaderos Main and Porotillo targets with copper-in-soil results. The image also shows locations of historical drilling, and it can be seen that historical drilling at Porotillo was located on, and to the north of, the margin of the magnetic body and was therefore not an adequate test.

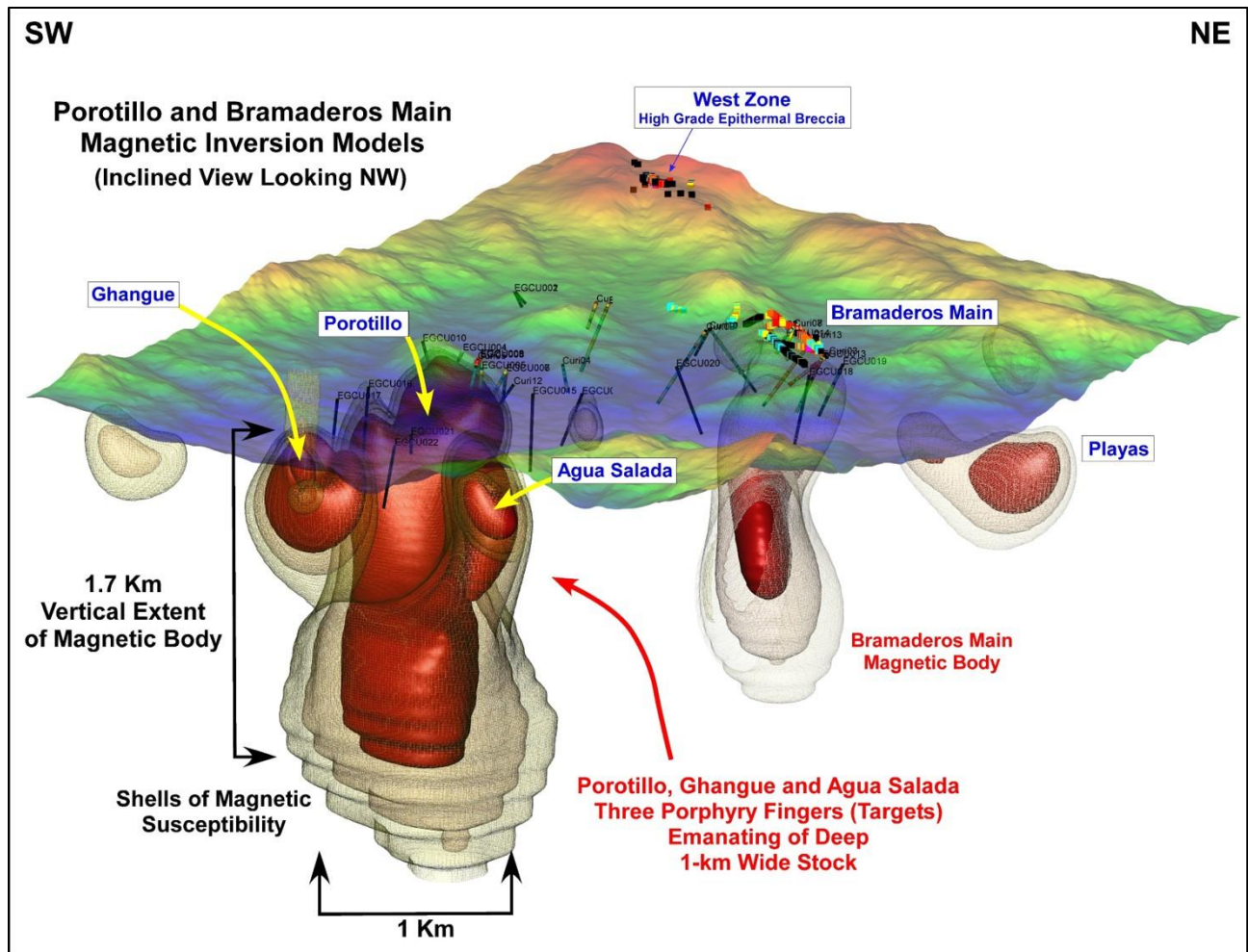


Figure 2: 3-D view looking towards the NW (towards West Zone) of the Bramaderos Main and Porotillo targets. Gold in trenches shown at Bramaderos Main and West Zone.

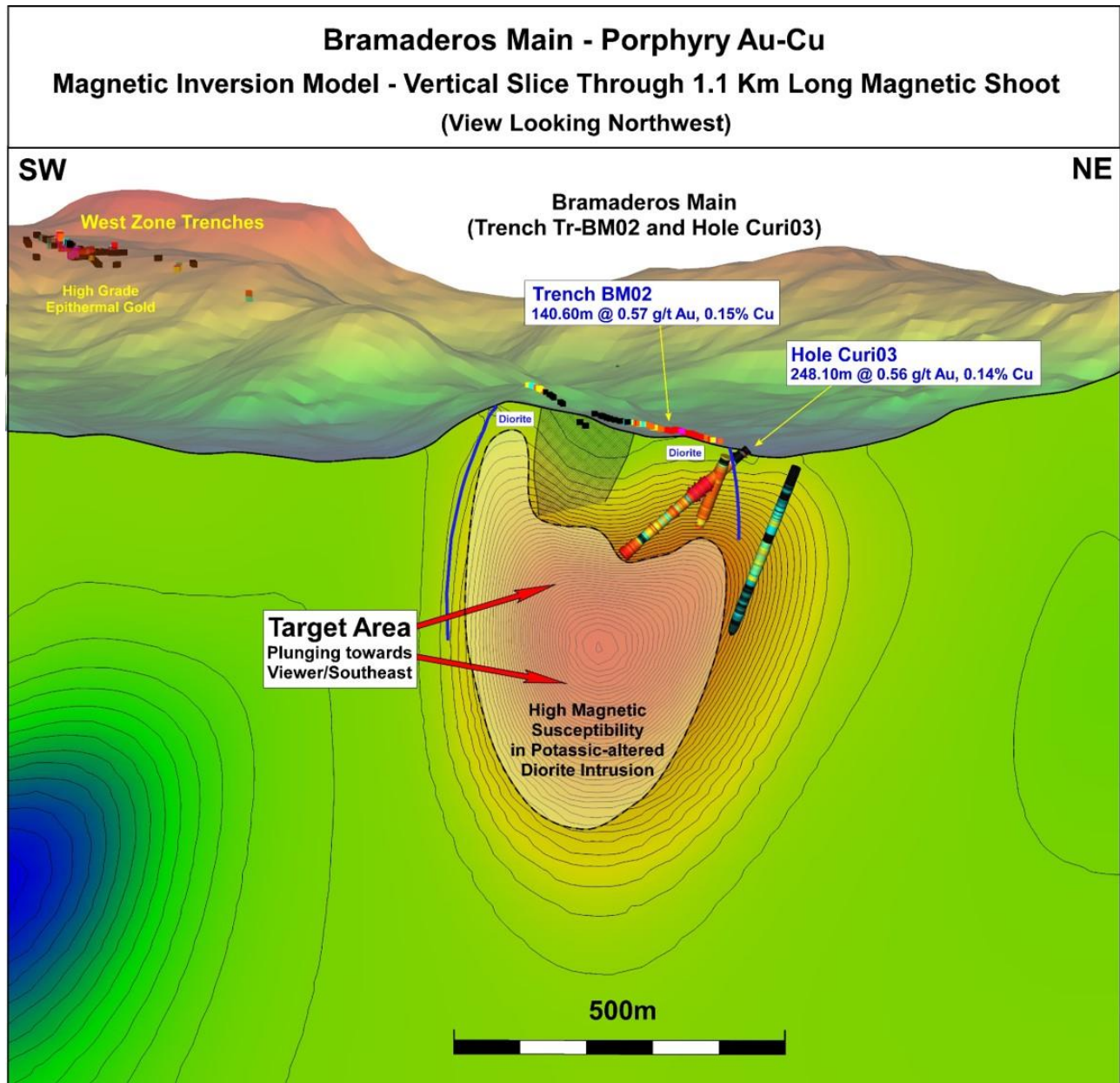


Figure 3: Cross section through the 3-D magnetic model showing the main anomaly area in relation to historical drilling in CURI03, and in trench BM02. The main magnetic area has not been drill tested and occurs just beyond the highest assay results from historical hole CURI03, which included 30.2m at 0.8g/t gold and 0.2% copper at the end of hole (i.e. mineralization open at depth from this drill hole).