

Figure 1: Bramaderos project showing the location of porphyry gold-copper targets outlined in blue, and epithermal gold-silver targets outlined in red.

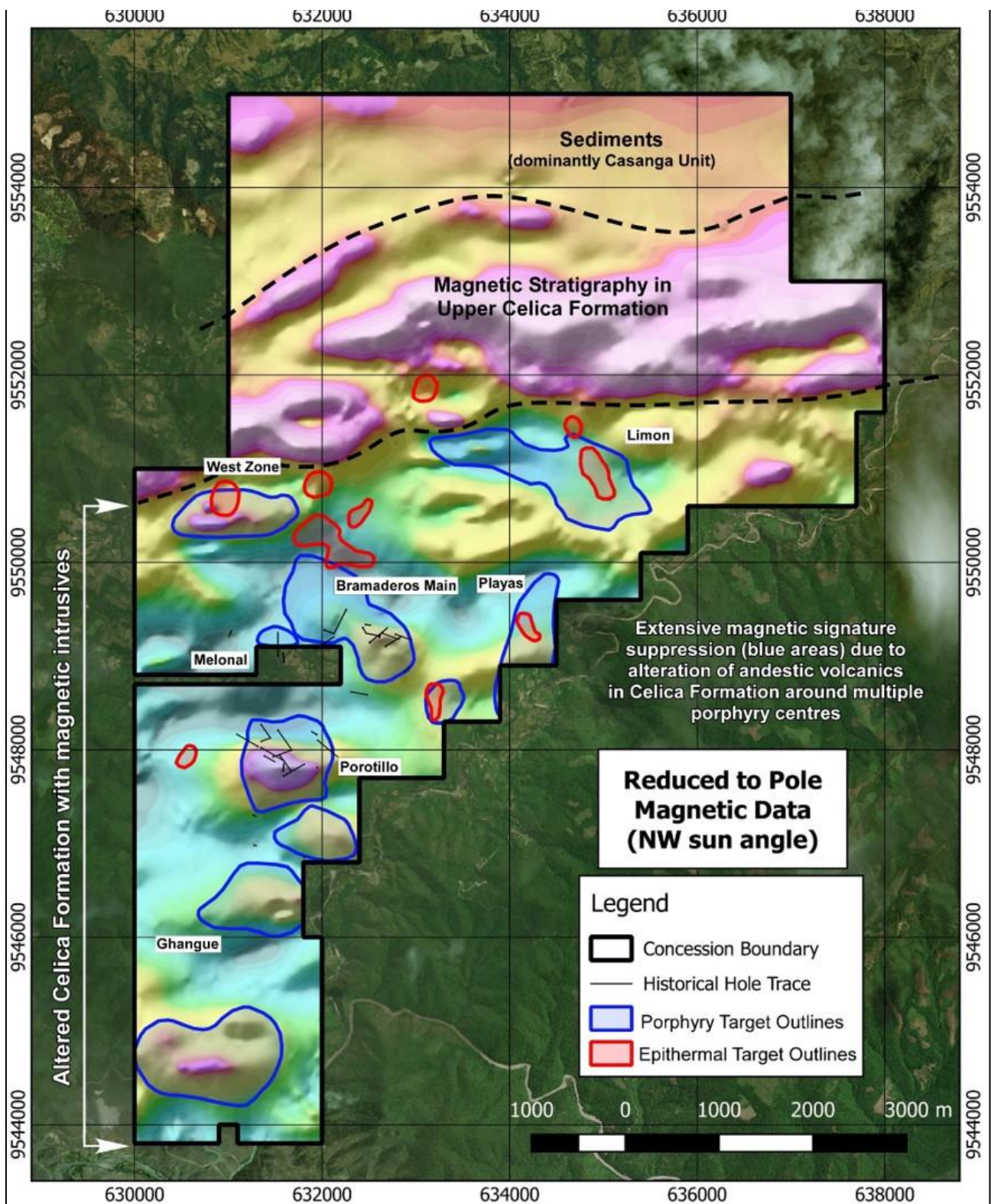


Figure 2: Processed heli-magnetics image showing outlines of multiple porphyry (blue) and epithermal (red) targets.

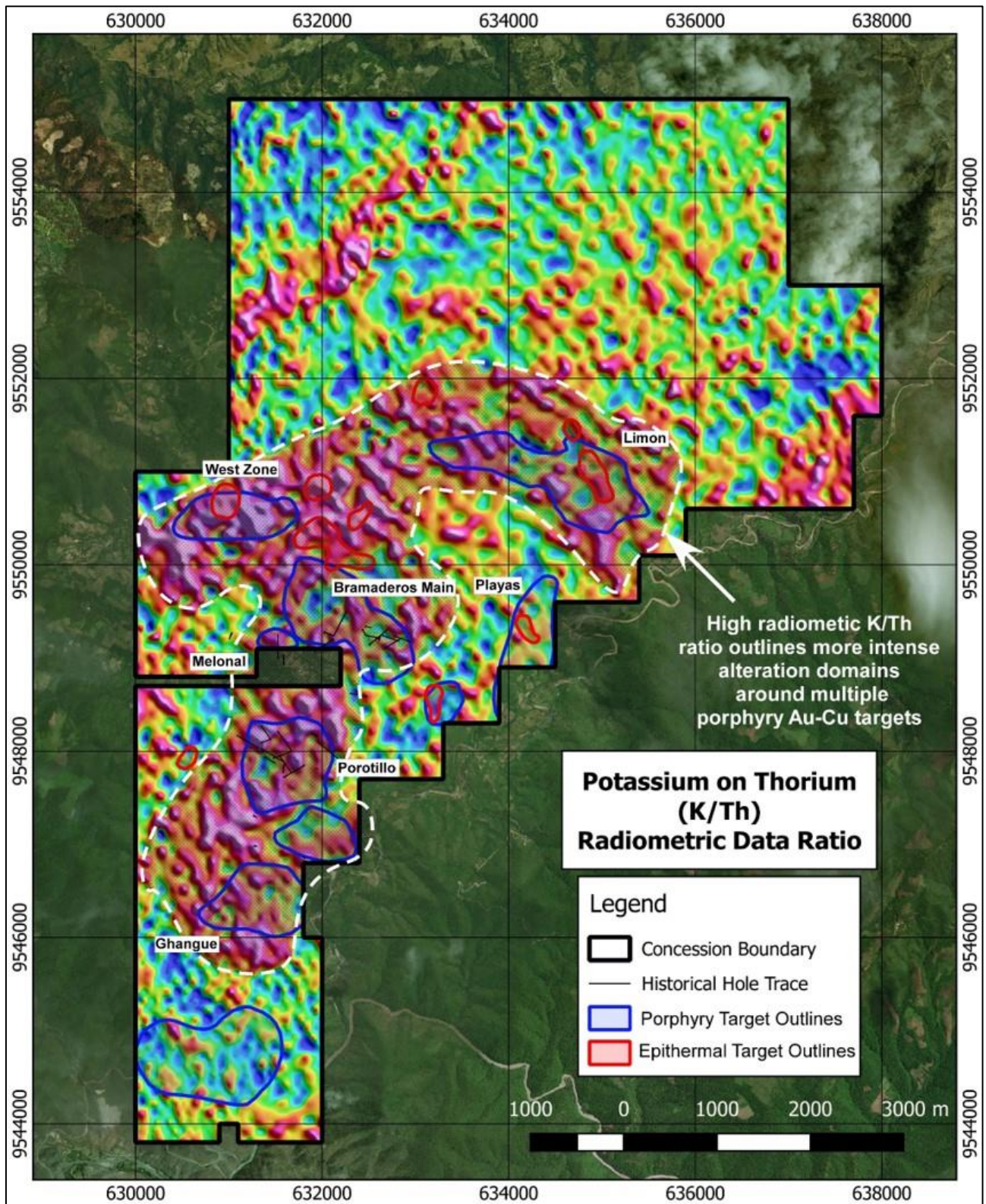


Figure 3: Processed Potassium (K) and Thorium (Th) radiometric data, with areas of high K/Th ratio delineating regions of intense hydrothermal alteration coalescing around multiple porphyry (blue) and epithermal (red) targets.