

Figure 1: Bramaderos project showing location of Limon Prospect and extent of soil sampling.

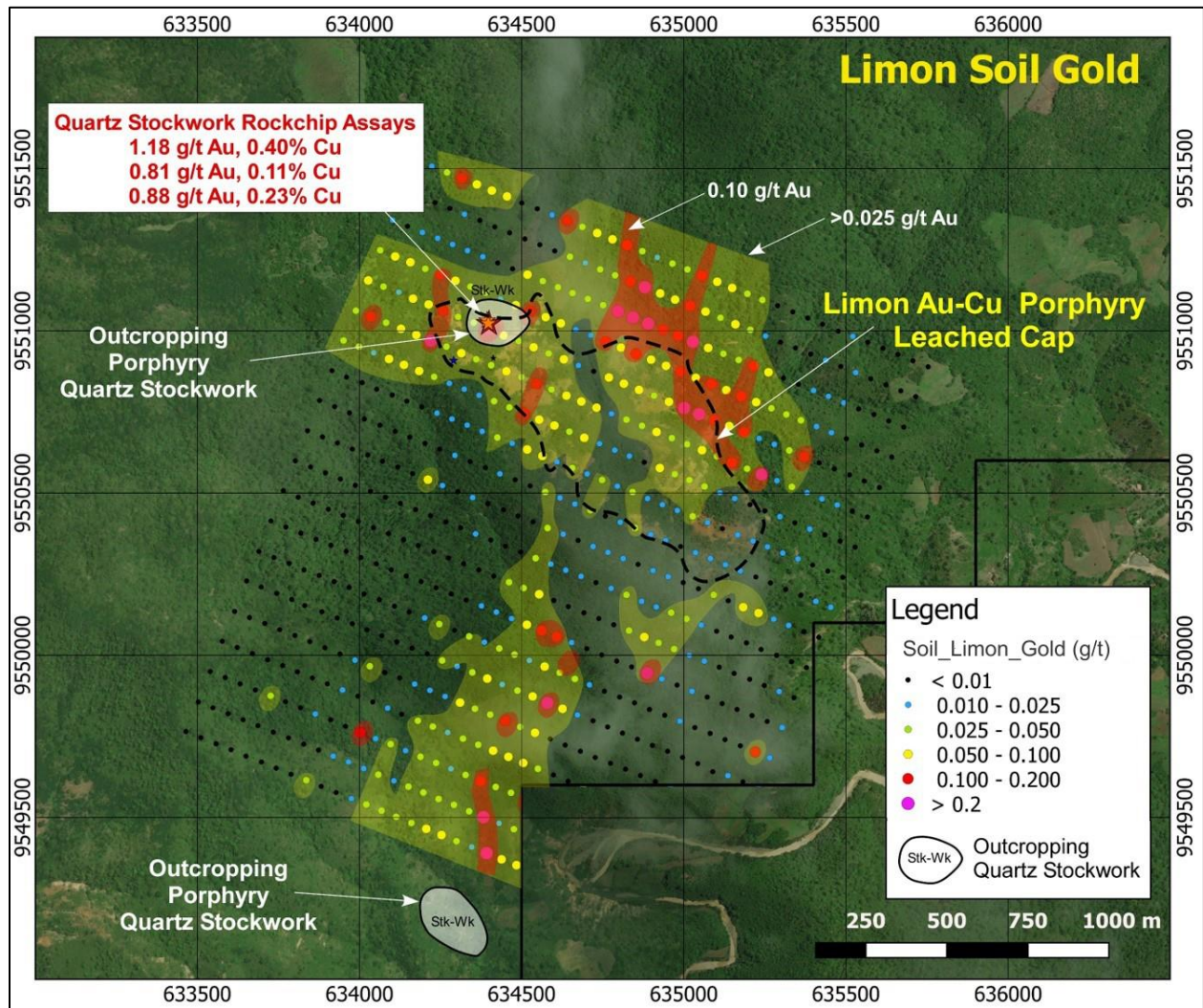


Figure 2: Soil sampling results showing gold anomalism at Limon, open to the north, and the definition in the southern area of an additional anomaly which is open to the south.

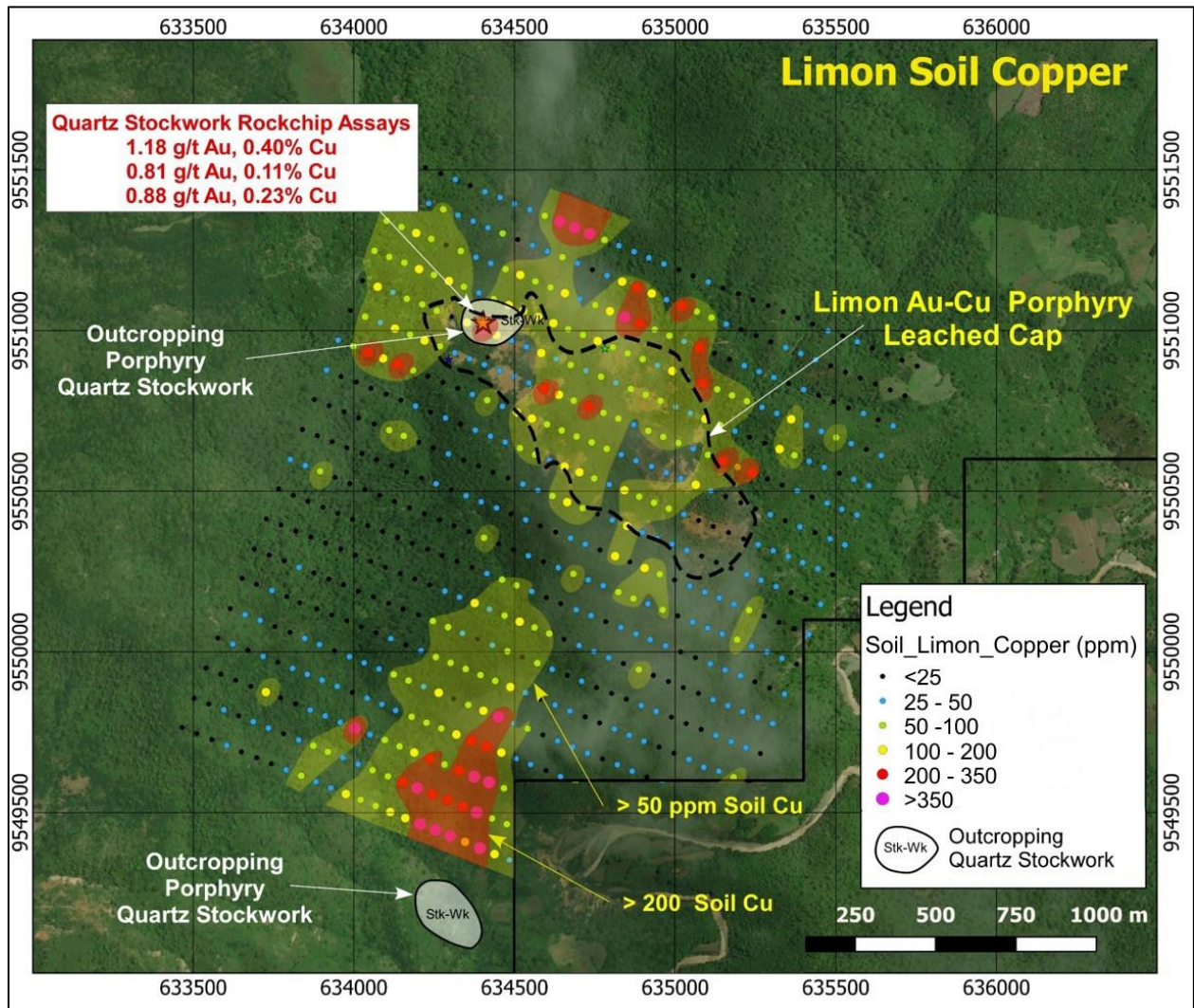


Figure 3: Soil sampling results showing copper anomalism at Limon, open to the north, and the definition in the southern area of an additional discrete anomaly which is open to the south.